



Gulet Atalanta

Atalanta is beautiful traditional gulet that can accommodate 15 guests in 7 cabins (1 master cabin and 6 double cabins). All cabins are air-conditioned, and with en-suite toilets. On guests disposal is the crew of 3-4 members, as well as additional equipment - dinghy with 40 Hp Yamaha outboard engine, snorkeling equipment and kayak.

PRICE LIST (2017)

Period:	01.01. – 24.06. 16.09. – 31.12.	24.06. – 22.07. 19.08. – 16.09.	22.07. - 19.08.
Price (€):	10.900	11.900	13.900

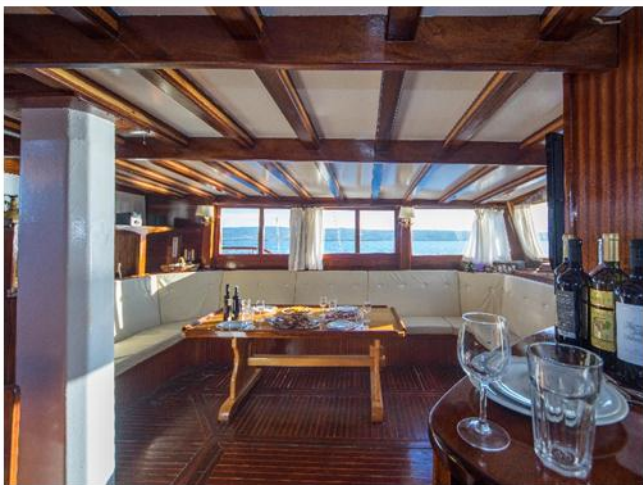
INCLUDED IN THE PRICE:

- the boat rental,
- four hours cruising per day,
- the crew members,
- complete bed clothes and towels,
- the use of all equipment on the boat except dinghy with its engine.

EXCLUDED:

- entrance fees to National parks,
- port taxes and residence tax,
- special demands of passengers for marinas, loading and landing in other port,
- use of dinghy for water sports,
- food & drinks.
- one way Split-Dubrovnik or reverse 900 EUR,
- extra hour motoring: 80 EUR,
- port taxes extra.

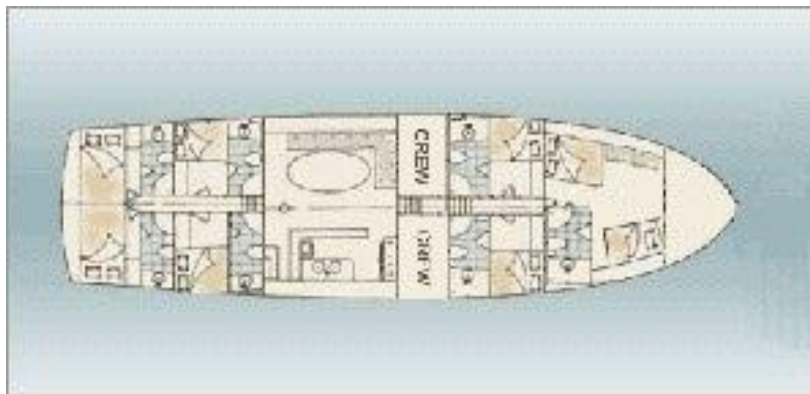




FOOD AND BEVERAGES OPTIONS:

- Half board: 290 EUR/week/person (includes welcome dinner)
- Full board: 430 EUR/week/person (includes welcome and captains dinner)

-All inclusive domestic drinks: 180 EUR/week/person
Drinks at ships bar at reasonable prices.



ACCOMMODATION:

- 4 double bed cabins,
- 2 twin bed cabins,
- 1 master bed cabin.

[Gulet Atalanta - photos](#)

PAYMENT CONDITIONS:

- 50% ADVANCE payment - upon reservation.
- 50% BALANCE payment - 5 weeks before charter period.

CHECK-IN: Saturday - 17:00 h

CHECK-OUT: Saturday - 09:00 h

